



New Visitors Guide



Visiting Discovery Park

Discovery Park is located in East Kent, centrally positioned between **Canterbury, Dover, and Thanet**. It is easily accessible from **Europe, London, and across the UK**, with excellent transport connections by car, train, plane, and ferry.



Arriving by Car

From London via M2:

Follow the **M2** motorway past Gillingham and Sittingbourne. After the Faversham turnoff, continue onto the **A299**, passing Whitstable and Herne Bay. Stay on the **A299** until you reach the Sevenscore roundabout, then join the **A256**. Follow this dual carriageway to Discovery Park. Upon arrival, follow **Monk's Way** and proceed to the **Visitor Centre**.

From London via M20:

Take the **M20** towards Folkestone and then proceed to Dover. From Dover, follow the **A256** to **Monk's Way** at Discovery Park.

Satnav:

Use postcode **CT13 9FF** for navigation.

Upon arrival:

Please report to the **Visitor Centre** to collect your pass.

Visitors should park at the Visitor Centre. If the Visitor Centre car park is full, use the Green Car Park (E) directly in front of the Visitor Centre car park.

If you are visiting one of our tenant companies on site, you will be collected from the Visitor Centre or provided more information by one of our reception team.

If you are a contractor working on site and this is your first visit to Discovery Park, please report to Gate C, as shown on the map on page 3, for an induction.

Contact details:



01304 614060



info@discovery-park.co.uk



discovery-park.co.uk



Discovery Park,
Innovation House,
Sandwich, Kent,
CT13 9FF



Site map

- | | | | |
|---|---------------------------------|----|---|
| 1 | Visitor Centre | 7 | Vertical Farming (GrowUp Farms) |
| 2 | Building 500 | 8 | Innovation House |
| 3 | GMP Cleanroom Manufacturing | 9 | Biomass Plant |
| 4 | Florey Chain House | 10 | Process Development Facility (Asymchem) |
| 5 | The Gateway | 11 | Discovery Park House |
| 6 | Commercial Land for development | 12 | Manufacturing Hub (Building 819) |





Arriving by Train

The nearest station to Discovery Park is **Thanet Parkway**, with high-speed trains from **London St Pancras International** taking **1 hour and 10 minutes**. Alternatively, you can arrive at **Sandwich Station** (1 hour and 30 minutes from London St Pancras).

We offer an electric shuttle bus service that operates regularly between local stations and Discovery Park during peak times. To arrange a pick-up, please call the **Visitor Centre** at **01304 614060** and provide your arrival time, departure time, and the name of your contact at Discovery Park.

If the shuttle bus is fully booked, please consider booking a taxi. Our recommended local taxi services are:

- **Sandwich Cars:** 01304 617424 or book online at www.sandwichcars.co.uk
- **Central Cars, Ramsgate:** 01843 595595



Arriving by Air



Discovery Park can be accessed by the key London airports:

- London Gatwick: 85 minutes.
- London City Airport: 90 minutes.
- London Heathrow: 110 minutes.

From the airports, you can travel to Discovery Park by train or road.



Hotels

Travelodge Sandwich

Conveniently situated on-site, a 75-room Travelodge hotel offers comfortable and accessible accommodation for visitors.

0871 984 6581

The Bell Hotel Sandwich

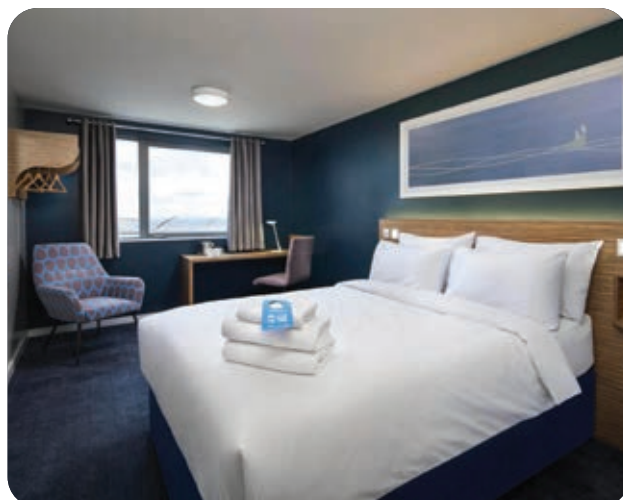
01304 613 388

Hampton by Hilton Canterbury

01227 936 505

The Yarrow Hotel Broadstairs

01843 460 100



VISITOR CENTRE WALKING ROUTES

- Visitor Centre to Building 500
- Visitor Centre to Discovery Park House
- Visitor Centre to Gateway
- Visitor Centre to Florey Chain House
- Visitor Centre to Innovation House
- Visitor Centre to Bus Stop



INNOVATION HOUSE

Defibrillator (Main Entrance)

Ground Floor

- Brunel, Magellan, Raleigh and Turing Suite Meeting Rooms
- Creative Kitchen Café
- Medical Room
- Gym

First Floor

- Start-up / Co-working Area
- Boardroom

Second Floor

- Social Zone

Train Stations

- Sandwich → 5 mins
- Thanet Parkway → 10 mins

Security Telephone: **01304 892 389**

Visitor Centre Reception Telephone: **01304 892 590**

THE GATEWAY

Defibrillator (Main Reception)

Ground Floor

- Courtyard
- Florence Suite and Da Vinci Suite Meeting Rooms
- Disabled Entrance

First Floor

- Main Reception
- Post / Parcel Collection

Second Floor

- Barclays Eagle Labs

BUILDING 500

First Floor

- Lawrence Suite Meeting Room

DISCOVERY PARK HOUSE

Defibrillator (Main Entrance)

Ground Floor

- Curie and Edison Suite Meeting Rooms
- Market Restaurant
- Multi Faith Room
- Physio / Occupational Health Services
- Goods In

Second Floor

- Newton Meeting Rooms

Key

- Fire Muster Points
- Cycle sheds and changing facilities
- Smoking Area
- Parking
- Electric Charging
- Bench
- Loading Bay
- Community Garden